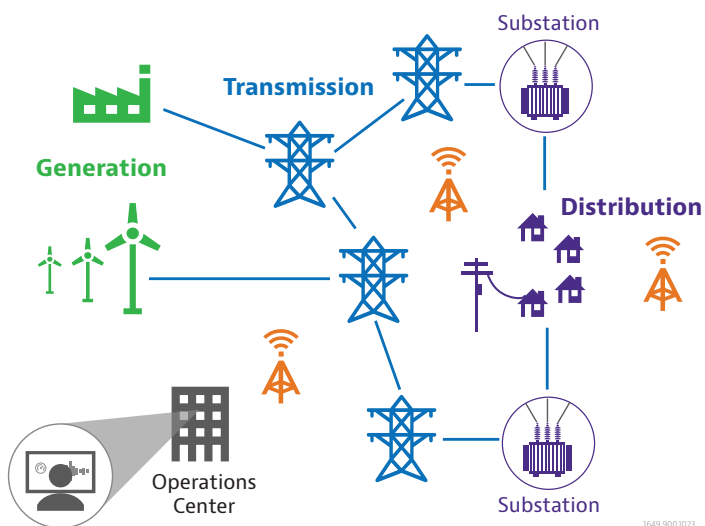


Ensure Reliability of Electric Grid LAN and WAN Network Communications

VIAVI T-BERD/MTS-5800-100G Tester

Communications networks, including substation LAN and WAN backbone play an essential role in the reliable and efficient operation of the electric power grid. These networks facilitate critical functions such as tele-protection, control and monitoring of critical equipment and nodes. Additionally, utility networks continue to transition from legacy T1/SONET/IRIG-B to Ethernet/MPLS.

The VIAVI T-BERD/MTS-5800-100G delivers power utility operators the capability to confidently activate new links, measure network reliability to rapidly diagnose and resolve problems. It gives field technicians all the test capabilities to ensure network performance including Ethernet/IP, VLANs, MPLS and 1588v2 (PTP). It also provides optical power, optical loss and C37.94 testing to ensure proper function of critical tele-protection links. Finally, technicians can test WAN and LAN fiber cable for cleanliness to confirm connectors, splices and patch panels are functioning properly.



1649 9001023



Key Benefits

- Complete 1G to 100G Ethernet Testing including IP, MPLS, VLANs and 1588v2 (PTP) in a compact and easy-to-use solution
- IEEE C37.94 testing as well as optical power and loss measurements for power utility tele-protection circuits
- Provides fiber end-face inspection and analysis to ensure proper function of connectors, splices and patch cables
- Expandable to add OTDR modules for fault finding, IL, ORL and bi-directional loss testing
- Enables continued support for legacy datacom, PDH and SONET network technology



All-in-One Handheld Tool

The configurable T-BERD/MTS-5800-100G is the industry's smallest dual-port 1G through 100G handheld test instrument. It can test a wide range for interfaces including Ethernet, SONET/SDH, PDH, Fibre Channel, Datacomm and IEEE C37.94.

- Compact and portable form factor – 7 x 9.5 x 3.2 in
- Large 7-inch multi-touch display
- Integrated WiFi and Bluetooth

VIAVI Fiber Test Tool Compatible

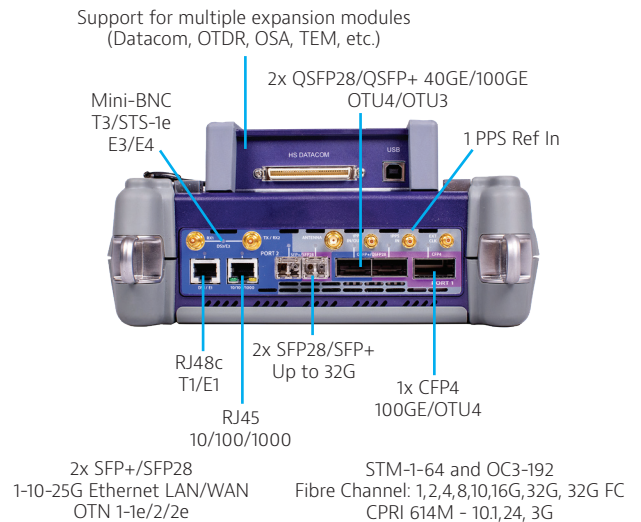
In addition to testing the network interface, operator field technicians may also need to qualify and troubleshoot the physical layer fiber plant. The T-BERD/MTS-5800-100G is fully compatible with:

- Both the FiberChek and P5000i probe microscopes for connector end-face inspection and analysis
- MP-Series optical power meters for optical power and loss measurements
- OTDR modules for fiber link characterization and fault-finding
Smart Link Mapper analysis software that displays OTDR results in a simple, icon-based map view for clear diagnostics of detected issues.
FiberComplete providing IL, ORL, and bi-directional OTDR tests.

Optimized for Easy Field Use

- Fixed test interfaces eliminate loose pluggable modules
- LEDs guide users to plug-ins for tests
- Streamlined user interface provides simple pass/fail, green/red results
- Extended battery life enables longer test times and offload results
- Boots up rapidly from power-on to test start
- Dual-port operation runs two tests simultaneously, including two 100 G high-speed tests
- Expandable with support for additional modules such as the TEM (Timing Expansion Module) for network synchronization and timing

5800-100G Hardware Supports Multiple Independent Concurrent Applications



Fiber Inspection with Automated Pass/Fail Analysis



Contact Us **+1 844 GO VIAVI**
(+1 844 468 4284)

To reach the VIAVI office nearest you, visit viavisolutions.com/contact

© 2023 VIAVI Solutions Inc. Product specifications and descriptions in this document are subject to change without notice. Patented as described at viavisolutions.com/patents/tb5800100g-electriclan-fly-nsd-nse-ae301938709001023